

# Carbon Reduction Plan

# Carbon Reduction Plan



At Powertherm Contract Services Ltd, we are dedicated to promoting sustainable practices and minimising our impact on the environment. This is why we are proud to have gained certification to ISO 14001:2015 Environmental Management System and are looking at methods for reducing carbon output to meet the UK Government's target of Net Zero by 2050.



# Powertherm Contract Services Ltd is committed to achieving net zero emissions by 2050

Net Zero refers to achieving a balance between the amount of greenhouse gas emissions produced and the amount removed from the atmosphere.

Emissions are divided into three scopes.

**Scope 1 Emissions:** these are defined as direct greenhouse gas emissions that occur from sources that are owned or controlled by Powertherm:

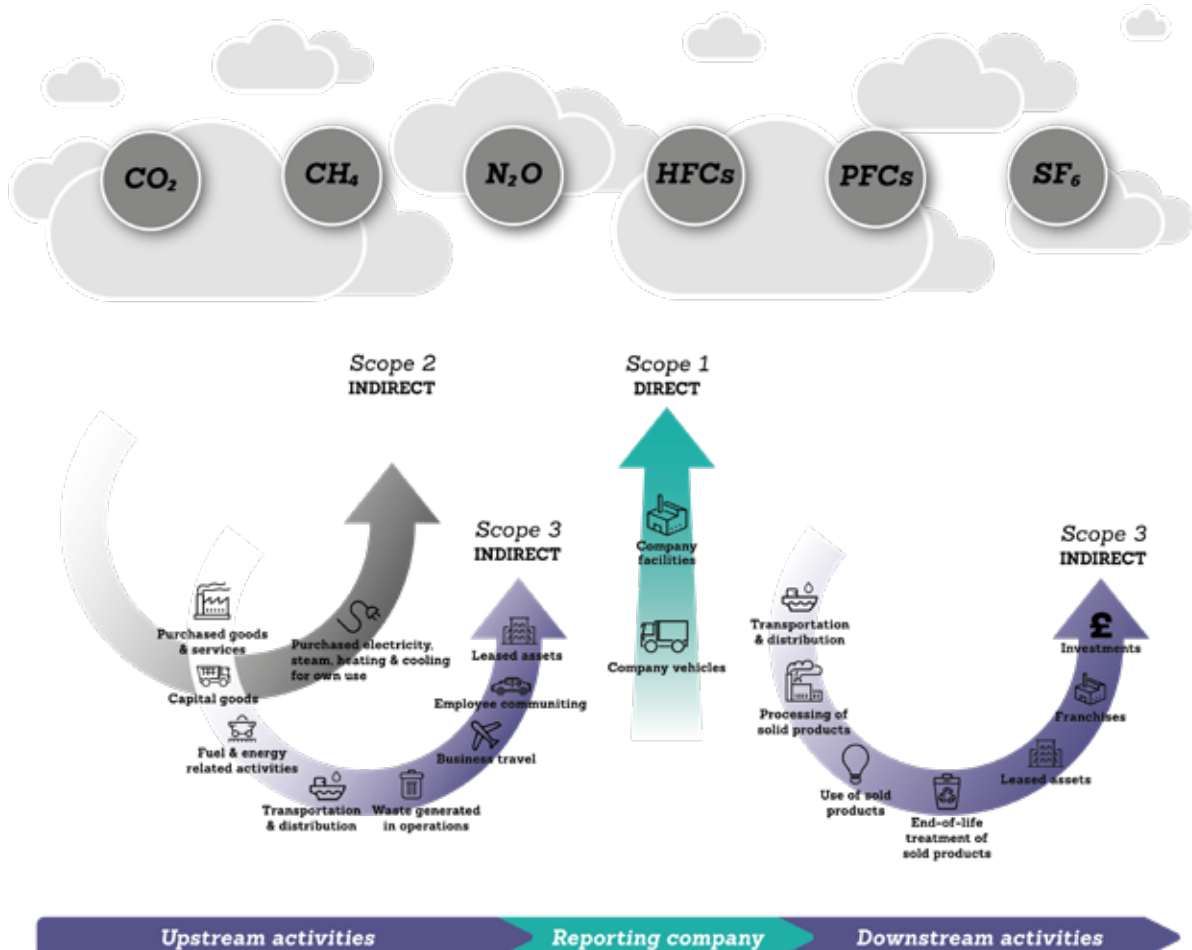
Generation of electricity, heat or steam. These emissions result from the combustion of fuels in stationary sources.

Transportation of materials, products, waste and employees. These emissions result from the combustion of fuels in the company owned/controlled combustion sources.

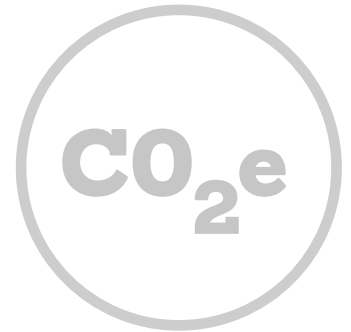
**Scope 2 Emissions:** these are defined as indirect greenhouse gas emissions generated from purchased or acquired electricity, steam, heat and cooling.

**Scope 3 Emissions:** these are defined as all other indirect emissions (not included in scope 2) that occur in a Powertherm's value chain.

The GHG Protocol's Scope 3 Technical Standard divides scope 3 emissions into upstream and downstream emissions.



# Powertherm's emissions



## Baseline Emissions - 2022:

### Additional details relating to the Baseline Emissions calculations.

Powertherm Contract Services established a baseline measurement across Scope 1, 2, and subset of Scope 3, according to PPN 06/21. 2022 was the first full year of carbon emissions data that we modelled and is therefore used as our baseline. The activities that account for Scope 1 and 2 emissions include the use of energy for heating, fuel for company vehicles, and electricity consumption. The base year emissions cover 100% of scope 1 & 2 emissions.

A subset of Scope 3 emissions has been calculated, these are waste generated in operations, business travel, commuting, and downstream transportation and distribution.

Scope	Source	Annual Consumption	CO <sub>2</sub> e (Tonnes)
Scope 1	Gas	248,600 kWh	45.5
	Propane	26,700 kWh	5.7
	Fuel purchased for company vehicles	44,740 litres (Diesel)	113
Scope 2	Electricity	160,600 kWh	33.3
Scope 3	Employee commuting	16,105 litres (Petrol and Diesel)	35
	Business travel	10,044 litres (Diesel)	25
	Waste generated in operations	31,704 kg (recycled or waste to energy)	0.7
	Downstream transportation and distribution	36,522 litres (Diesel)	92
<b>Total emissions</b>			<b>350.2</b>

Please note: upstream and downstream transportation and distribution has not been calculated at present.

## Current Emissions - 2023:

Scope	Source	Annual Consumption	CO <sub>2</sub> e (Tonnes)
Scope 1	Gas	230,500 kWh	42
	Propane	54,100 kWh	11.8
	Fuel purchased for company vehicles	61,669 litres (Diesel)	155
Scope 2	Electricity	150,000 kWh	31
Scope 3	Employee commuting	17,922 litres (Petrol and Diesel)	40
	Business travel	13,234 litres (Diesel)	33
	Waste generated in operations	43,734 kg (recycled or waste to energy)	0.9
	Downstream transportation and distribution	49,924 litres (Diesel)	125
Total emissions			438.7

**25% uplift in carbon emissions between 2022 & 2023, against a 40% increase in business activity.**

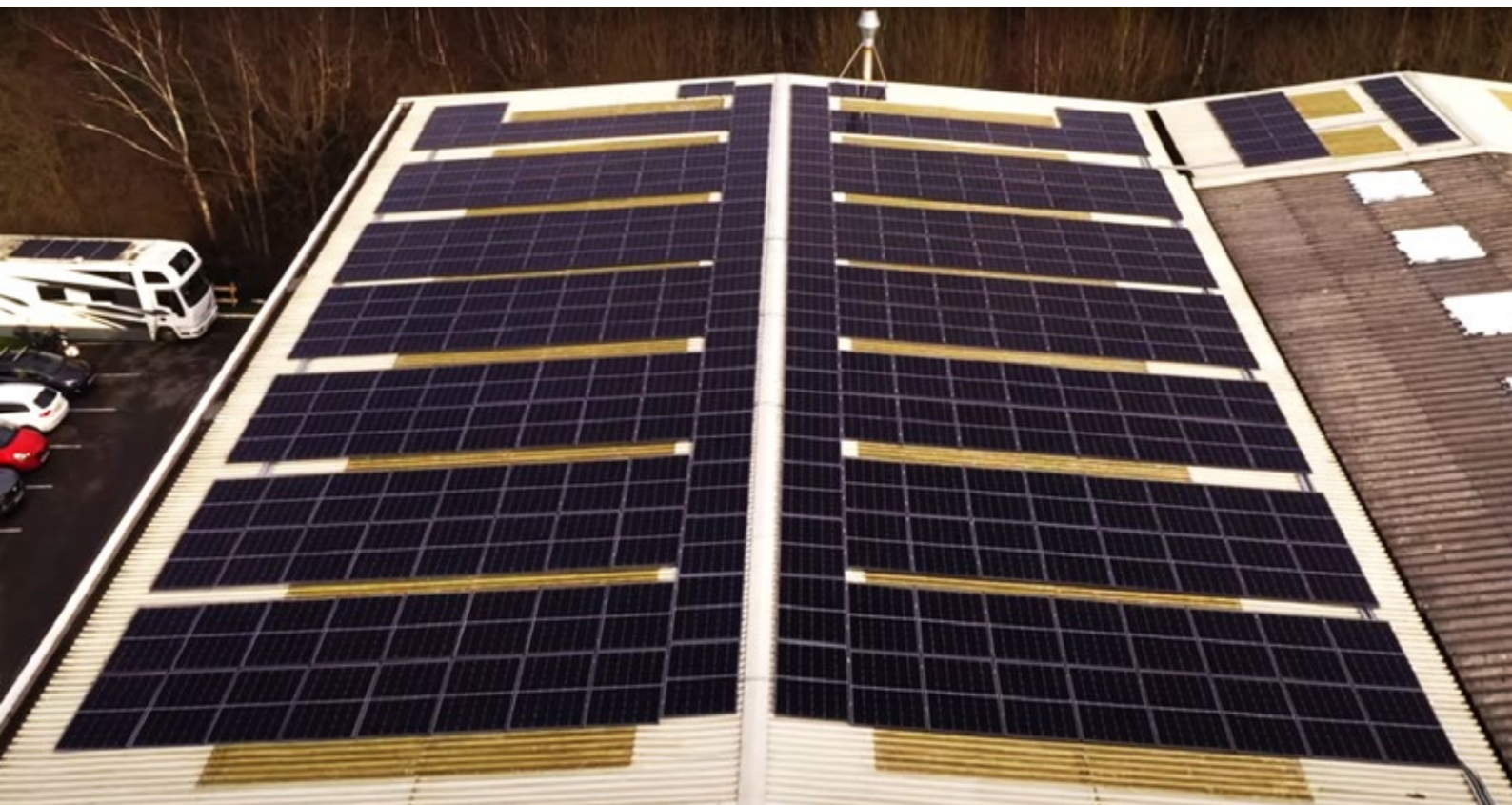




# Current environmental initiatives

Recognising and embracing a commitment to protect and preserve the environment for the sustainability of the future. Subsequently, we are an ISO14001 (Environmental Management) certified company, with the latest recertification audit in November 2023.

- › Quarterly carbon reduction emission reviews, including energy saving actions identified from ESOS reports.
- › Solar panels fitted to head office to produce clean and renewable energy.
- › We are using an electric forklift truck at head office to promote a cleaner working environment
- › We are now using electric scissor lifts instead of diesel powered on site.
- › LED lighting upgrades with enhanced controls.
- › Environmental Aspects and Impacts assessment completed to minimise the company's releases and emissions.
- › Recording of paint emissions data on-going to ensure compliance to Environmental Regulations (Volatile Organic Compounds).
- › We evaluate new suppliers' environmental policies and sustainability procedures.



# Future environmental initiatives

To adhere to our Environmental Policy and Principles, we constantly monitor our environmental management and energy efficiency, seeking to innovate and develop opportunities for continuous environmental awareness and positive change.

- › **Implementation of ESOS report identified opportunities:**
  - › Heating upgrades at Head Office to the boiler and air conditioning system.
  - › Air quality upgrades at Head Office to the extraction system.
  - › Energy saving vertical door curtains installing to the warehouse at Head Office.
- › **Digitalise forms to reduce paper usage.**
- › **Continual review of Powertherm's vehicle fleet to identify efficiency improvements.**
- › **Review of waste management streams for reuse and recycling opportunities.**
- › **Create a Net Zero roadmap for Scopes 1 & 2.**



# Declaration and sign off

**This Carbon Reduction Plan has been completed in accordance with PPN 06/21 and associated guidance and reporting standard for Carbon Reduction Plans.**

Emissions have been reported and recorded in accordance with the published reporting standard for Carbon Reduction Plans and the GHG Reporting Protocol corporate standard and uses the appropriate Government emission conversion factors for greenhouse gas company reporting.

Scope 1 and Scope 2 emissions have been reported in accordance with SECR requirements, and the required subset of Scope 3 emissions have been reported in accordance with the published reporting standard for Carbon Reduction Plans and the Corporate Value Chain (Scope 3) Standard.

This Carbon Reduction Plan has been reviewed and signed off by the board of directors (or equivalent management body).

**Signed on behalf of the Powertherm Contract Services Ltd:**



**Date: 05/06/2024**

Calculation methodologies and emission conversion factors are used to convert an activity (such as purchased electricity in kWh) to greenhouse gas emissions (CO<sub>2</sub>e). Powertherm utilises the most up to date emissions factors available, such as those provided by the UK Government.

Sources

Technical Guidance for Calculating Scope 3 Emissions:

[https://ghgprotocol.org/sites/default/files/2023-03/Scope3\\_Calculation\\_Guidance\\_0%5B1%5D.pdf](https://ghgprotocol.org/sites/default/files/2023-03/Scope3_Calculation_Guidance_0%5B1%5D.pdf)

Technical standard for Completion of Carbon Reduction Plans:

[https://assets.publishing.service.gov.uk/media/60ba4d208fa8f57ce980b5b7/PPN\\_0621\\_Technical\\_standard\\_for\\_the\\_Completion\\_of\\_Carbon\\_Reduction\\_Plans\\_\\_2\\_.pdf](https://assets.publishing.service.gov.uk/media/60ba4d208fa8f57ce980b5b7/PPN_0621_Technical_standard_for_the_Completion_of_Carbon_Reduction_Plans__2_.pdf)

Greenhouse gas reporting: conversion factors 2023:

<https://www.gov.uk/government/publications/greenhouse-gas-reporting-conversion-factors-2023>

PAS 2060 Carbon Neutrality:

<https://www.bsigroup.com/en-IN/PAS-2060-Carbon-Neutrality/>

Ferrybridge 1 & 2 Power Stations (enfinium):

<https://enfinium.co.uk/in-a-uk-industry-first-enfinium-creates-digital-twins-of-its-operating-facilities/>

**Head Office**

Francis House  
52 Orgreave Drive  
Sheffield  
S13 9NR

**Tel:** +44 (0) 114 288 9119

**Regional Offices:**

Ellesmere Port, Cheshire  
Saltend, Humberside  
Teesside, Middlesbrough

---

**Email:** [info@powertherm.co.uk](mailto:info@powertherm.co.uk)

**[www.powertherm.co.uk](http://www.powertherm.co.uk)**

**Our social media:**

